



This communique is prepared at the end of each month to provide key stakeholders with information relating to the ‘Reef recovery to improve Whitsundays tourism’ project progress, consultation and activities. This project has been enabled by funding from the Queensland and Australian Governments.

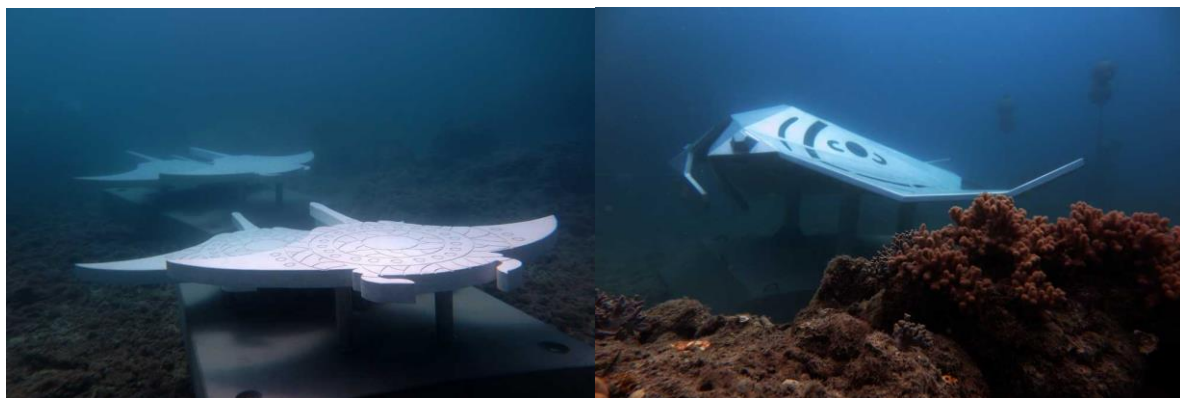
*Public art and reef recovery to improve Whitsundays tourism*  
*1 August 2019*

Permits granted

On 10 July 2019, Marine Parks permit G19/41557.1 was granted to Reef Ecologic and Whitsunday Regional Council for operating a facility (six underwater artworks) and a research program. On 10 July 2019, Sea Dumping Permit 19/02 was granted to Reef Ecologic for six modules.

Public Art Installation

Four of the six major sculptures (Turtle Dream, Maori Wrasse, Manta Ray and Migration of the Mantas) have been installed in the Great Barrier Reef at popular tourism sites damaged by ex-Cyclone Debbie. A huge thank you to the expert team from David Edge Marine Contracting, Whitsunday Mooring and Marine Constructions, artists, QPWS and GBRMPA for working collaboratively with Reef Ecologic to successfully deploy the sculptures. The location of the sculptures, GPS locations and depths of water are in the table below. Bywa will be installed in Horseshoe Bay during August (weather permitting). Anthozoa is under construction and anticipated date of completion and installation is September.



| <b>Sculpture</b>        | <b>Reef</b>    | <b>GPS coordinates</b>  | <b>Water Depth</b> |
|-------------------------|----------------|-------------------------|--------------------|
| Turtle Dream            | Langford Reef  | S20.08338<br>E148.88167 | 7                  |
| Maori Wrasse            | Blue Pearl Bay | S20.04365<br>E148.88150 | 7                  |
| Manta Ray               | Manta Ray Bay  | S20.06096<br>E148.95596 | 6                  |
| Migration of the Mantas | Manta Ray Bay  | S20.06105<br>E148.95601 | 4                  |

### Ministerial visit to Langford Reef – 1 August

The Minister for Tourism, the Hon Kate Jones MP visited Langford Reef on the 1st August with Tourism Whitsundays, Mayor of Whitsundays, Bowen Tourism, artists, indigenous stakeholders and Reef Ecologic (photo below).

#### Project in the media

- <https://www.tourismbowen.com.au/blog/entry/big-mango-big-art-big-ideas-how-art-can-help-the-reef>
- <https://planeterra.org/what-we-do/our-projects/reefecologic/>
- [Tourism Whitsundays media release 1 August](#)



### Exclusive Great Barrier Reef Festival tour – 3 August

As part of the Great Barrier Reef Festival there are two exclusive, half-day underwater sculpture tours planned for 3 August with a maximum of 40 tickets as part of the Great Barrier Reef Festival. Tickets are going fast - don't miss this exclusive opportunity to be the first to swim with giant turtle, Manta Ray and Maori Wrasse.

| Exclusive tour 1   | Exclusive tour 2   |
|--|--|
| Morning 7:30am - 12 noon, 3 August<br>Speakers: Adriaan Vanderlugt (artist) and Adam Smith (scientist) | Afternoon 7:30am – 12 noon, 3 August<br>Speakers: Col Henry (artist) and Nathan Cook (scientist) |

Tickets are priced at \$160 each and include talks, vessel transport to 3 islands (Hook, Hayman and Langford), 3 snorkel trips to view underwater sculptures and reef restoration research, morning or afternoon tea and snorkel gear. Several other famous and emerging artists will also be on the tour for you to meet as well as underwater heroes.

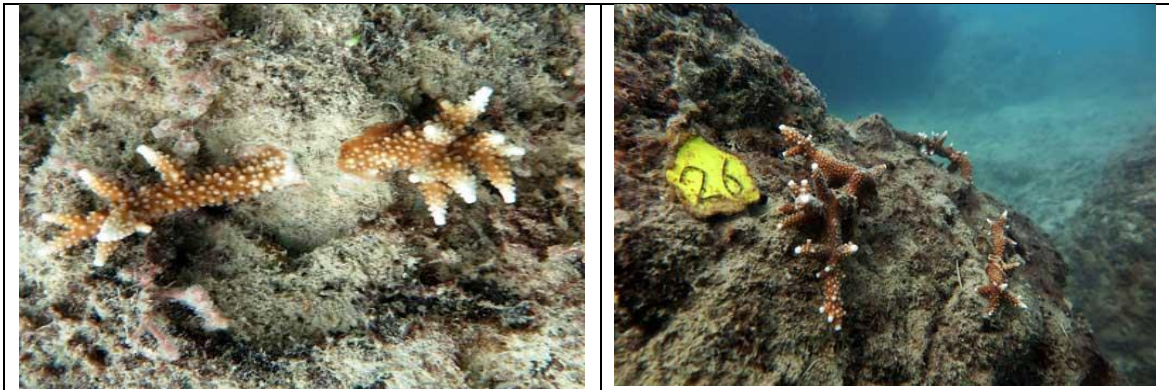
To book go to

<https://www.greatbarrierreeffestival.com.au/events/underwater-sculpture-trail-talks/>

NOTE- all revenue for this tour goes to Great Barrier Reef Festival and Reef Ecologic or artists are donating their time.

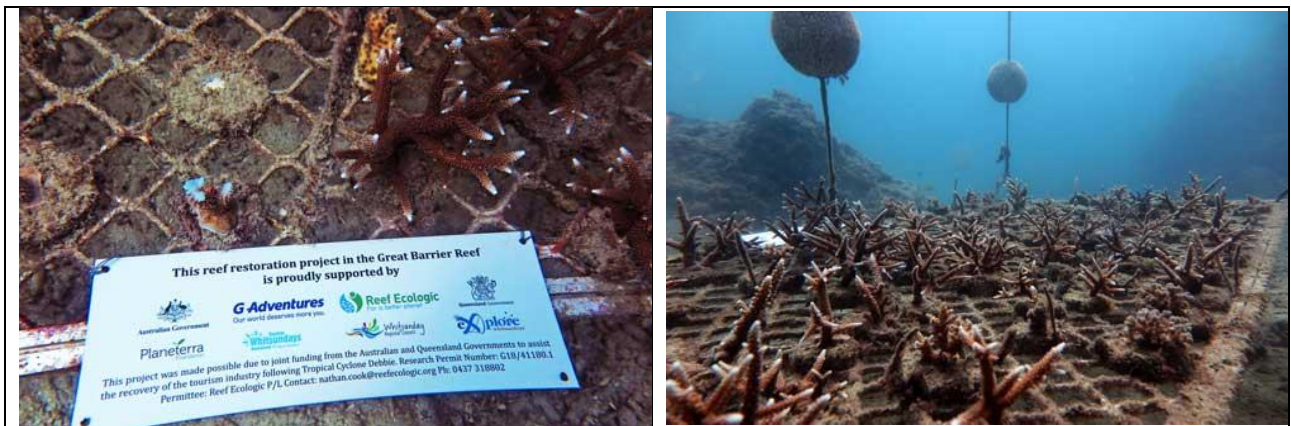
## Reef Restoration

Reef restoration activities continue positively at both Blue Pearl and Manta Ray Bay. All coral nurseries are performing well maintaining their survival rate of 80% across all methods and locations. Recent research on the 188 outplanted corals have indicated they are doing well with survival as high as 92% in Manta Ray Bay in the two months since outplanting onto the natural reef.



## New partnerships

Over the past two months Reef Ecologic have entered into new partnerships with organisations to support the expansion of reef restoration activities in the Whitsundays. International tour operator [G Adventures](#) and their not-for-profit partner [Planeterra Foundation](#) through local tourism group [Explore Whitsundays](#), are providing financial support to continue and expand reef restoration activities both locations. Stay tuned for some major upscaling of our reef restoration project in the region.



## How you can help the reef

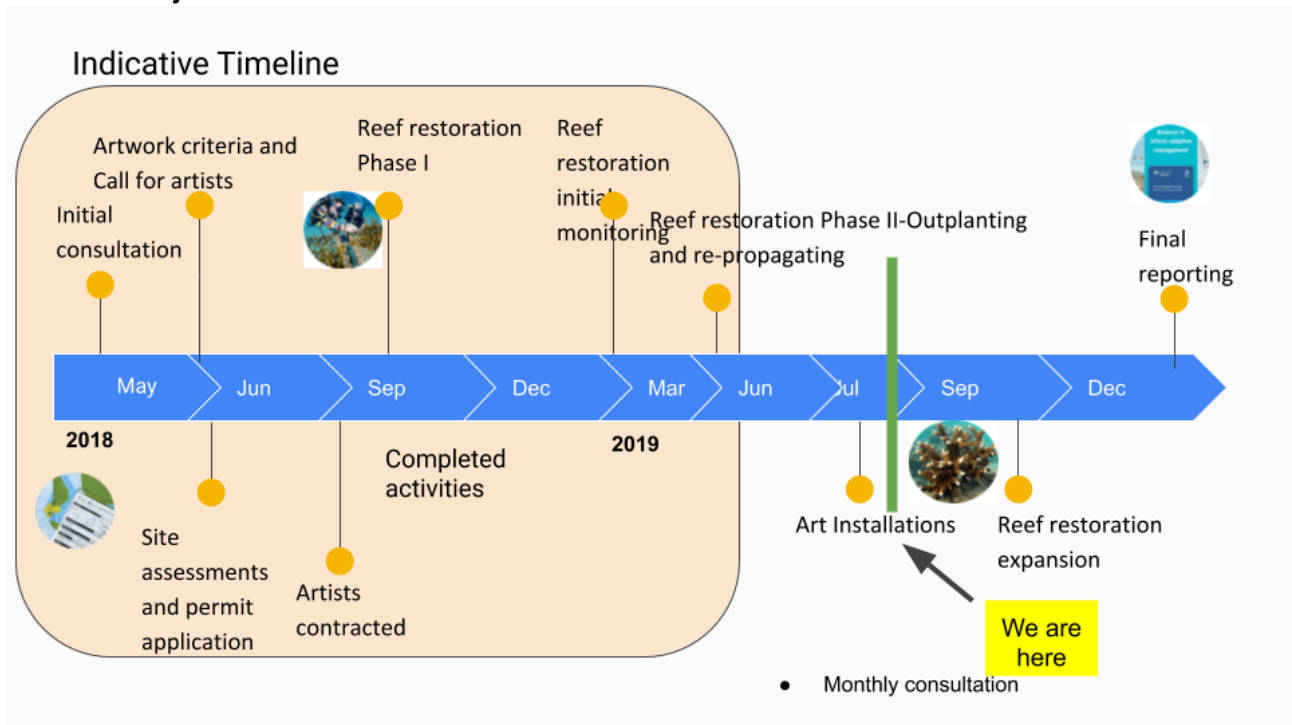
1. Assist Reef Ecologic with social surveys regarding Reef health and aesthetics.
2. Volunteer with Reef Ecologic to assist with reef restoration ([nathan.cook@reefecologic.org](mailto:nathan.cook@reefecologic.org) or phone 0437 318802)
3. Share this communiqué with your social media and business networks
4. Take a friend snorkelling on the reef
5. Reduce your environmental footprint and take a specific action such as buy local food produce

Upcoming activities

**Proposed activities and milestones in June-August 2019**

- 1-4 August: Whitsunday Reef Festival artist talks and tours (pending permit decisions)
- Early August: Installation of 5<sup>th</sup> sculpture, *Bywa*, at Horseshoe Bay, Bowen
- 14-23 August Expansion of reef restoration at Blue Pearl and Manta Ray Bay
- 31 September: Installation of 6<sup>th</sup> sculpture, *Anthozoa* at Blue Pearl Bay

**Indicative Project Timeline**



Thank you for your support

|  |  |
|--|--|
| <p><i>Australian Government</i><br/> <i>Tourism Whitsundays</i><br/> <i>Explore Whitsundays</i><br/> <i>Whitsunday Reef Festival</i><br/> <i>Queensland Parks and Wildlife Service</i><br/> <i>Whitsunday Moorings &amp; Marine Constructions</i><br/> <i>G Adventures</i></p> | <p><i>Queensland Government</i><br/> <i>David Edge Barges</i><br/> <i>Aquadive Airlie Beach</i><br/> <i>Great Barrier Reef Marine Park Authority</i><br/> <i>Explore Whitsundays</i><br/> <i>Coral Coast Oceaneering</i><br/> <i>Planeterra Foundation</i></p> |
|--|--|

Thank you for your support

For more information please contact Reef Ecologic at [adam.smith@reefecologic.org](mailto:adam.smith@reefecologic.org) or see [www.reefecologic.org](http://www.reefecologic.org)